

## TEST REPORT

CLIENT DETAILS

Contact Aiyun Wu  
 Client SHANDONG PENGBAI ENVIRONMENTAL PROTECTION EQUIPMENT CO., LTD.  
 Address DAWANG TOWN, GUANGRAO COUNTY, DONGYING CITY, SHANDONG PROVINCE CHINA  
 Telephone 86 -13119696600  
 Facsimile -  
 Email Ireneivan@sbcglobal.net  
 Order Number -  
 Samples Ambient air(3) Waste gas(3)  
 Project -

LABORATORY DETAILS

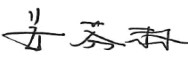
Manager SGS-CSTC  
 Laboratory Environment Laboratory  
 Address SGS Center, No. 143, Zhuzhou Road, Laoshan District, Qingdao, China (P.C. 266101)  
 Telephone +86 (532) 6899 9269  
 Facsimile +86 (532) 80991955  
 Email Shirley-cy.Zhou@sgs.com  
 Report Number QDE22-50037 R1  
 SGS Reference 0000021246  
 Date Reported 2022/06/20  
 Analysis Date 2022/06/09 - 2022/06/20

COMMENTS

1. The results apply to the sample(s) as sampled.
2. Sampling address:Duzhuang Industrial Park, Mengyin County, Linyi City.
3. The report is used only for customers of scientific research, teaching, internal quality control, product research and development purposes, no proof social role.
4. The report is translated from QDE22-50037 R0 .

SIGNATORIES

刘泓江  
 Tiffany Liu  
 Reported by

  
 Candy Jiang  
 Reviewed by

  
 Devin Bi  
 Report Approved by



Unless otherwise agreed in writing, this document is issued by the Company subject to its General Conditions of Service printed overleaf, available on request or accessible at <http://www.sgs.com/en/Terms-and-Conditions.aspx> and, for electronic format documents, subject to Terms and Conditions for Electronic Documents at <http://www.sgs.com/en/Terms-and-Conditions/Terms-e-Documents.aspx>. Attention is drawn to the limitation of liability, indemnification and jurisdiction issues defined therein. Any holder of this document is advised that information contained hereon reflects the Company's findings at the time of its intervention only and within the limits of Client's instructions, if any. The Company's sole responsibility is to its Client and this document does not exonerate parties to a transaction from exercising all their rights and obligations under the transaction documents. This document cannot be reproduced except in full, without prior written approval of the Company. Any unauthorized alteration, forgery or falsification of the content or appearance of this document is unlawful and offenders may be prosecuted to the fullest extent of the law.  
**Attention: To check the authenticity of testing /inspection report & certificate, please contact us at telephone: (86-755) 8307 1443, or email: [CN.Doccheck@sgs.com](mailto:CN.Doccheck@sgs.com)**

## 声明 Statement

1. 检测报告无本实验室检验检测专用章无效。  
The test report is invalid without the official seal of the laboratory.
2. 未经本公司书面许可，不得复制(全文复制除外)检测报告。  
This test report cannot be reproduced in any way, except in full content, without prior approval in writing by the laboratory.
3. 检测报告无编制、审核、批准人签字无效。  
The test report is invalid without the signature of the compiler, the checker and the approver
4. 检测报告涂改无效。  
The test report is invalid if altered.
5. 本检测报告以中文为准，英文文本(如有)仅为译文，两者发生冲突时，应以中文文本为准。  
The test report has been drafted in Chinese and translated into English (if applicable) for convenience only. In the event of discrepancy, the Chinese version shall prevail.
6. 送检样品的样品类型、样品名称、样品描述、项目名称等信息由客户提供，样品的代表性和真实性由委托人负责。  
The sample type, sample name, sample description, project name and other information of the submitted samples are provided by the client. The representativeness and authenticity of the samples are in the charge of the client.
7. 如未加盖CMA章则仅供内部参考，不具有对社会的证明作用。  
The report is for internal reference only if it is not stamped with CMA mark, it has no proof function to the society.
8. 如对本检测报告有异议，请在收到报告10天之内与本公司联系。  
Should you have any queries or objection to the test report, please contact us within 10 days after receiving the report.

### 符号表/Legend

- "-" 未测试该参数或不适用/The parameter is not tested or not applicable
- ↑ 提高检出限/Detection limit raised
- ↓ 降低检出限/Detection limit lowered
- ND 未检出/Not Detected



Unless otherwise agreed in writing, this document is issued by the Company subject to its General Conditions of Service printed overleaf, available on request or accessible at <http://www.sgs.com/en/Terms-and-Conditions.aspx> and, for electronic format documents, subject to Terms and Conditions for Electronic Documents at <http://www.sgs.com/en/Terms-and-Conditions/Terms-e-Documents.aspx>. Attention is drawn to the limitation of liability, indemnification and jurisdiction issues defined therein. Any holder of this document is advised that information contained hereon reflects the Company's findings at the time of its intervention only and within the limits of Client's instructions, if any. The Company's sole responsibility is to its Client and this document does not exonerate parties to a transaction from exercising all their rights and obligations under the transaction documents. This document cannot be reproduced except in full, without prior written approval of the Company. Any unauthorized alteration, forgery or falsification of the content or appearance of this document is unlawful and offenders may be prosecuted to the fullest extent of the law.

**Attention: To check the authenticity of testing /inspection report & certificate, please contact us at telephone: (86-755) 8307 1443, or email: [CN.Doccheck@sgs.com](mailto:CN.Doccheck@sgs.com)**

Sample Number	22-50037.001	22-50037.002	22-50037.003
Test Object	Ambient air	Ambient air	Ambient air
Sample Description	-	-	-

Parameter	Method	Units	MDL	Testing Results		
Sampling number	-	-	-	QDE22-50037.001	QDE22-50037.002	QDE22-50037.003
Sampling location	-	-	-	Up wind1#	Down wind2#	Down wind3#
Sampling Date	-	-	-	2022/06/09	2022/06/09	2022/06/09
Sampling time	-	-	-	10:30-11:30	10:30-11:30	10:30-11:30
Temperature	-	°C	-	26.7	26.7	26.7
Humidity	-	%	-	59.4	59.4	59.4
Atmospheric Pressure	-	kPa	-	97.8	97.8	97.8
Wind speed	-	m/s	-	1.2	1.2	1.2
Wind direction	-	-	-	Southwest	Southwest	Southwest
PM2.5	HJ 618	mg/m <sup>3</sup>	0.010	0.161	0.146	0.190



Unless otherwise agreed in writing, this document is issued by the Company subject to its General Conditions of Service printed overleaf, available on request or accessible at <http://www.sgs.com/en/Terms-and-Conditions.aspx> and, for electronic format documents, subject to Terms and Conditions for Electronic Documents at <http://www.sgs.com/en/Terms-and-Conditions/Terms-e-Documents.aspx>. Attention is drawn to the limitation of liability, indemnification and jurisdiction issues defined therein. Any holder of this document is advised that information contained hereon reflects the Company's findings at the time of its intervention only and within the limits of Client's instructions, if any. The Company's sole responsibility is to its Client and this document does not exonerate parties to a transaction from exercising all their rights and obligations under the transaction documents. This document cannot be reproduced except in full, without prior written approval of the Company. Any unauthorized alteration, forgery or falsification of the content or appearance of this document is unlawful and offenders may be prosecuted to the fullest extent of the law.

Attention: To check the authenticity of testing /inspection report & certificate, please contact us at telephone: (86-755) 8307 1443, or email: [CN.Doccheck@sgs.com](mailto:CN.Doccheck@sgs.com)

Sample Number	22-50037.004	22-50037.005	22-50037.006
Test Object	Flue emission	Flue emission	Flue emission
Sample Description	-	-	-

Parameter	Method	Units	MDL	Testing Results		
Sampling location	-	-	-	The Detector of Flue gas	The Detector of Flue gas	The Detector of Flue gas
Sampling Date	-	-	-	2022/06/09	2022/06/09	2022/06/09
Sampling time	-	-	-	11:26-12:26	12:54-13:54	14:14-15:14
Sec.ar.	-	m <sup>2</sup>	-	0.196	0.196	0.196
Moisture Content	-	%	-	2.0	1.9	2.0
Dry Standard Flowrate	-	m <sup>3</sup> /h	-	5.78 X 10 <sup>3</sup>	5.80 X 10 <sup>3</sup>	5.50 X 10 <sup>3</sup>
Exhaust Height	-	m	-	15	15	15
PM2.5(Emission conc.)	ISO 23210	mg/m <sup>3</sup>	0.1	<0.1	<0.1	<0.1
PM2.5(Emission rate)	ISO 23210	kg/h	-	<5.78×10 <sup>-4</sup>	<5.80×10 <sup>-4</sup>	<5.50×10 <sup>-4</sup>

Remarks:

1. The height of exhaust funnel shall be provided by the customer.



Unless otherwise agreed in writing, this document is issued by the Company subject to its General Conditions of Service printed overleaf, available on request or accessible at <http://www.sgs.com/en/Terms-and-Conditions.aspx> and, for electronic format documents, subject to Terms and Conditions for Electronic Documents at <http://www.sgs.com/en/Terms-and-Conditions/Terms-e-Documents.aspx>. Attention is drawn to the limitation of liability, indemnification and jurisdiction issues defined therein. Any holder of this document is advised that information contained hereon reflects the Company's findings at the time of its intervention only and within the limits of Client's instructions, if any. The Company's sole responsibility is to its Client and this document does not exonerate parties to a transaction from exercising all their rights and obligations under the transaction documents. This document cannot be reproduced except in full, without prior written approval of the Company. Any unauthorized alteration, forgery or falsification of the content or appearance of this document is unlawful and offenders may be prosecuted to the fullest extent of the law.  
**Attention: To check the authenticity of testing /inspection report & certificate, please contact us at telephone: (86-755) 8307 1443, or email: [CN.Doccheck@sgs.com](mailto:CN.Doccheck@sgs.com)**

## Method List

HJ 618-2011 Determination of atmospheric particles PM10 and PM2.5 in ambient air by gravimetric method  
ISO 23210-2009 Stationary source emissions—Determination of PM10&PM2.5 mass concentration in flue gas



Unless otherwise agreed in writing, this document is issued by the Company subject to its General Conditions of Service printed overleaf, available on request or accessible at <http://www.sgs.com/en/Terms-and-Conditions.aspx> and, for electronic format documents, subject to Terms and Conditions for Electronic Documents at <http://www.sgs.com/en/Terms-and-Conditions/Terms-e-Documents.aspx>. Attention is drawn to the limitation of liability, indemnification and jurisdiction issues defined therein. Any holder of this document is advised that information contained hereon reflects the Company's findings at the time of its intervention only and within the limits of Client's instructions, if any. The Company's sole responsibility is to its Client and this document does not exonerate parties to a transaction from exercising all their rights and obligations under the transaction documents. This document cannot be reproduced except in full, without prior written approval of the Company. Any unauthorized alteration, forgery or falsification of the content or appearance of this document is unlawful and offenders may be prosecuted to the fullest extent of the law.  
**Attention: To check the authenticity of testing /inspection report & certificate, please contact us at telephone: (86-755) 8307 1443, or email: [CN.Doccheck@sgs.com](mailto:CN.Doccheck@sgs.com)**

**Method:Sampling site information\***

Equipment Name	Model	Equipment Number	Serial Number
Multifunctional Air Sampler	崂应2050	EHS3327-1	Q05052300
Sampler for air particulate matter	ZR-3922	EHS3335-3	3922D21103693
Sampler for air particulate matter	ZR-3922	EHS3335-4	3922D21103708

**Method:HJ 618-2011**

Equipment Name	Model	Equipment Number	Serial Number
Balance	ME55/02	QDCH-E644	C202355616

**Method:GB/T 16157-1996\***

Equipment Name	Model	Equipment Number	Serial Number
Particulate matter and gas tester	ZR-3260D	EHS3424-3	3260D19058400

**Method:ISO 23210-2009**

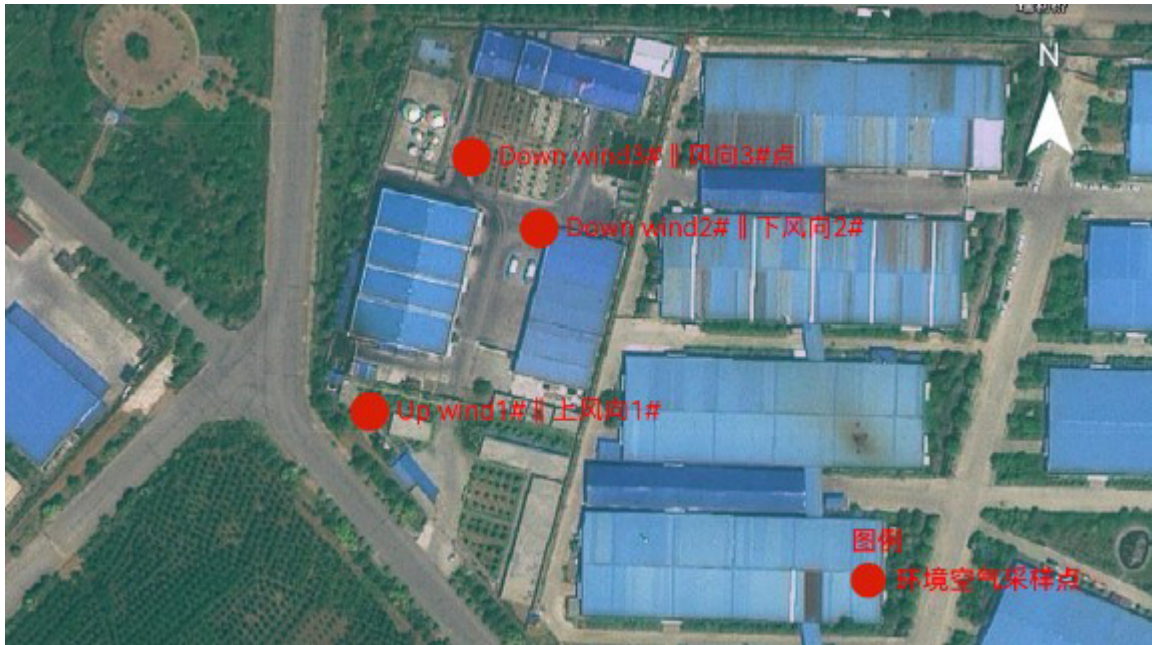
Equipment Name	Model	Equipment Number	Serial Number
Balance	ME55/02	QDCH-E644	C202355616



Unless otherwise agreed in writing, this document is issued by the Company subject to its General Conditions of Service printed overleaf, available on request or accessible at <http://www.sgs.com/en/Terms-and-Conditions.aspx> and, for electronic format documents, subject to Terms and Conditions for Electronic Documents at <http://www.sgs.com/en/Terms-and-Conditions/Terms-e-Documents.aspx>. Attention is drawn to the limitation of liability, indemnification and jurisdiction issues defined therein. Any holder of this document is advised that information contained hereon reflects the Company's findings at the time of its intervention only and within the limits of Client's instructions, if any. The Company's sole responsibility is to its Client and this document does not exonerate parties to a transaction from exercising all their rights and obligations under the transaction documents. This document cannot be reproduced except in full, without prior written approval of the Company. Any unauthorized alteration, forgery or falsification of the content or appearance of this document is unlawful and offenders may be prosecuted to the fullest extent of the law.

**Attention: To check the authenticity of testing /inspection report & certificate, please contact us at telephone: (86-755) 8307 1443, or email: [CN.Doccheck@sgs.com](mailto:CN.Doccheck@sgs.com)**





\*\*\* End of Report \*\*\*



Unless otherwise agreed in writing, this document is issued by the Company subject to its General Conditions of Service printed overleaf, available on request or accessible at <http://www.sgs.com/en/Terms-and-Conditions.aspx> and, for electronic format documents, subject to Terms and Conditions for Electronic Documents at <http://www.sgs.com/en/Terms-and-Conditions/Terms-e-Documents.aspx>. Attention is drawn to the limitation of liability, indemnification and jurisdiction issues defined therein. Any holder of this document is advised that information contained hereon reflects the Company's findings at the time of its intervention only and within the limits of Client's instructions, if any. The Company's sole responsibility is to its Client and this document does not exonerate parties to a transaction from exercising all their rights and obligations under the transaction documents. This document cannot be reproduced except in full, without prior written approval of the Company. Any unauthorized alteration, forgery or falsification of the content or appearance of this document is unlawful and offenders may be prosecuted to the fullest extent of the law.

Attention: To check the authenticity of testing /inspection report & certificate, please contact us at telephone: (86-755) 8307 1443, or email: [CN.Doccheck@sgs.com](mailto:CN.Doccheck@sgs.com)